

Improving Forecasting Accuracy in the Case of Intermittent Demand Forecasting

Daisuke Takeyasu¹

¹The Open University of Japan,
Chiba City, Japan

Asami Shitara²

²Tax Corporation Arknet, Shizuoka
City, Japan

Kazuhiro Takeyasu³

³College of Business Administration,
Tokoha University, Shizuoka, Japan

Abstract—In making forecasting, there are many kinds of data. Stationary time series data are relatively easy to make forecasting but random data are very difficult in its execution for forecasting. Intermittent data are often seen in industries. But it is rather difficult to make forecasting in general. In recent years, the needs for intermittent demand forecasting are increasing because of the constraints of strict Supply Chain Management. How to improve the forecasting accuracy is an important issue. There are many researches made on this. But there are rooms for improvement. In this paper, a new method for cumulative forecasting method is proposed. The data is cumulated and to this cumulated time series, the following method is applied to improve the forecasting accuracy. Trend removing by the combination of linear and 2nd order non-linear function and 3rd order non-linear function is executed to the production data of X-ray image intensifier tube device and Diagnostic X-ray image processing apparatus. The forecasting result is compared with those of the non-cumulative forecasting method. The new method shows that it is useful for the forecasting of intermittent demand data. The effectiveness of this method should be examined in various cases.

Keywords—intermittent demand forecasting; minimum variance; exponential smoothing method; trend

I. INTRODUCTION

Supply chain management is inevitable in industries in recent years. Demand forecasting is the basis in supply chain management. In industries, how to improve forecasting accuracy such as sales, shipping is an important issue. There are cases that intermittent demand forecasting is required. But the mere application of the past method does not bear good estimation of parameters and exquisite forecasting.

There are many researchers made on this.

Based upon the Croston's model (Box et al.2008), Shenstone and Hyndma (2005) analyzed the intermittent demand forecasting. Troung et al. (2011) applied Neural Network to intermittent demand forecasting. Tanaka et al. (2012) has built sales forecasting model for book publishing, where they have devised cumulative forecasting method.

In this paper, we further develop this cumulative forecasting method in order to improve the forecasting accuracy for intermittent demand.

A new method for cumulative forecasting method is proposed.

The data is cumulated and to this cumulated time series, the following method is applied to improve the forecasting accuracy. Focusing that the equation of exponential smoothing method(ESM) is equivalent to (1,1) order ARMA model equation, a new method of estimation of smoothing constant in exponential smoothing method is proposed before by us which satisfies minimum variance of forecasting error[7]. Generally, smoothing constant is selected arbitrarily. But in this paper, we utilize above stated theoretical solution. Firstly, we make estimation of ARMA model parameter and then estimate smoothing constants.

Thus theoretical solution is derived in a simple way and it may be utilized in various fields. Furthermore, combining the trend removing method with this method, we aim to improve the forecasting accuracy. An approach to this method is executed in the following method. Trend removing by the combination of linear and 2nd order non-linear function and 3rd order non-linear function is executed to the data of X-ray image intensifier tube device and Diagnostic X-ray image processing apparatus. The weights for these functions are set 0.5 for two patterns at first and then varied by 0.01 increment for three patterns and optimal weights are searched. For the comparison, monthly trend is removed after that. Theoretical solution of smoothing constant of ESM is calculated for both of the monthly trend removing data and the non-monthly trend removing data. Then forecasting is executed on these data.

The forecasting result is compared with those of the non-cumulative forecasting method. The new method shows that it is useful for the forecasting of intermittent demand data. The effectiveness of this method should be examined in various cases.

The rest of the paper is organized as follows. In section 2, the new method is described. ESM is stated by ARMA model and estimation method of smoothing constant is derived using ARMA model identification. The combination of linear and non-linear function is introduced for trend removing and the Monthly Ratio is also referred. Forecasting is executed in section 3, and estimation accuracy is examined, which is followed by the Discussion of section 4

II. DESCRIPTION OF THE NEW METHOD

A. Description of ESM Using ARMA Model^[5]

In ESM, forecasting at time $t+1$ is stated in the following equation.

$$\begin{aligned}\hat{x}_{t+1} &= \hat{x}_t + \alpha(x_t - \hat{x}_t) \\ &= \alpha x_t + (1 - \alpha)\hat{x}_t\end{aligned}\quad (1)$$

Here,

\hat{x}_{t+1} : forecasting at $t+1$

x_t : realized value at t

α : smoothing constant ($0 < \alpha < 1$)

(1) is re-stated as

$$\hat{x}_{t+1} = \sum_{l=0}^{\infty} \alpha(1-\alpha)^l x_{t-l} \quad (2)$$

By the way, we consider the following (1,1) order ARMA model.

$$x_t - x_{t-1} = e_t - \beta e_{t-1} \quad (3)$$

Generally, (p, q) order ARMA model is stated as

$$x_t + \sum_{i=1}^p a_i x_{t-i} = e_t + \sum_{j=1}^q b_j e_{t-j} \quad (4)$$

Here,

$\{x_t\}$: Sample process of Stationary Ergodic Gaussian

Process $x(t) \ t = 1, 2, \dots, N, \dots$

$\{e_t\}$: Gaussian White Noise with 0 mean σ_e^2 variance

MA process in (4) is supposed to satisfy convertibility condition. Utilizing the relation that

$$E[e_t | e_{t-1}, e_{t-2}, \dots] = 0$$

we get the following equation from (3).

$$\hat{x}_t = x_{t-1} - \beta e_{t-1} \quad (5)$$

Operating this scheme on $t+1$, we finally get

$$\begin{aligned}\hat{x}_{t+1} &= \hat{x}_t + (1 - \beta)e_t \\ &= \hat{x}_t + (1 - \beta)(x_t - \hat{x}_t)\end{aligned}\quad (6)$$

If we set $1 - \beta = \alpha$, the above equation is the same with (1), i.e., equation of ESM is equivalent to (1,1) order ARMA model, or is said to be (0,1,1) order ARIMA model because 1st order AR parameter is -1 ^[1].

Comparing with (3) and (4), we obtain

$$\begin{cases} a_1 = -1 \\ b_1 = -\beta \end{cases}$$

From (1), (6),

$$\alpha = 1 - \beta$$

Therefore, we get

$$\begin{cases} a_1 = -1 \\ b_1 = -\beta = \alpha - 1 \end{cases} \quad (7)$$

From above, we can get estimation of smoothing constant after we identify the parameter of MA part of ARMA model. But, generally MA part of ARMA model become non-linear equations which are described below. Let (4) be

$$\tilde{x}_t = x_t + \sum_{i=1}^p a_i x_{t-i} \quad (8)$$

$$\tilde{x}_t = e_t + \sum_{j=1}^q b_j e_{t-j} \quad (9)$$

We express the autocorrelation function of \tilde{x}_t as \tilde{r}_k and from (8), (9), we get the following non-linear equations which are well known.

$$\left\{ \begin{aligned} \tilde{r}_k &= \sigma_e^2 \sum_{j=0}^{q-k} b_j b_{k+j} & (k \leq q) \\ 0 & & (k \geq q+1) \\ \tilde{r}_0 &= \sigma_e^2 \sum_{j=0}^q b_j^2 \end{aligned} \right\} \quad (10)$$

For these equations, a recursive algorithm has been developed. In this paper, parameter to be estimated is only b_1 , so it can be solved in the following way.

From (3) (4) (7) (10), we get

$$\left. \begin{aligned} q &= 1 \\ a_1 &= -1 \\ b_1 &= -\beta = \alpha - 1 \\ \tilde{r}_0 &= (1 + b_1^2)\sigma_e^2 \\ \tilde{r}_1 &= b_1\sigma_e^2 \end{aligned} \right\} \quad (11)$$

If we set

$$\rho_k = \frac{\tilde{r}_k}{\tilde{r}_0} \quad (12)$$

the following equation is derived.

$$\rho_1 = \frac{b_1}{1 + b_1^2} \quad (13)$$

We can get b_1 as follows.

$$b_1 = \frac{1 \pm \sqrt{1 - 4\rho_1^2}}{2\rho_1} \quad (14)$$

In order to have real roots, ρ_1 must satisfy

$$|\rho_1| \leq \frac{1}{2} \quad (15)$$

From invertibility condition, b_1 must satisfy

$$|b_1| < 1$$

From (13), using the next relation,

$$(1 - b_1)^2 \geq 0$$

$$(1 + b_1)^2 \geq 0$$

(15) always holds. As

$$\alpha = b_1 + 1$$

b_1 is within the range of

$$-1 < b_1 < 0$$

Finally we get

$$\left. \begin{aligned} b_1 &= \frac{1 - \sqrt{1 - 4\rho_1^2}}{2\rho_1} \\ \alpha &= \frac{1 + 2\rho_1 - \sqrt{1 - 4\rho_1^2}}{2\rho_1} \end{aligned} \right\} \quad (16)$$

which satisfy above condition. Thus we can obtain a theoretical solution by a simple way.

Here ρ_1 must satisfy

$$-\frac{1}{2} < \rho_1 < 0 \quad (17)$$

in order to satisfy $0 < \alpha < 1$.

Focusing on the idea that the equation of ESM is equivalent to (1,1) order ARMA model equation, we can estimate smoothing constant after estimating ARMA model parameter.

It can be estimated only by calculating 0th and 1st order autocorrelation function.

B. Trend Removal Method^[5]

As trend removal method, we describe the combination of linear and non-linear function.

[1] Linear function

We set

$$y = a_1x + b_1 \quad (18)$$

as a linear function.

[2] Non-linear function

We set

$$y = a_2x^2 + b_2x + c_2 \quad (19)$$

$$y = a_3x^3 + b_3x^2 + c_3x + d_3 \quad (20)$$

as a 2nd and a 3rd order non-linear function.

[3] The combination of linear and non-linear function

We set

$$y = \alpha_1(a_1x + b_1) + \alpha_2(a_2x^2 + b_2x + c_2) \quad (21)$$

$$y = \beta_1(a_1x + b_1) + \beta_2(a_3x^3 + b_3x^2 + c_3x + d_3) \quad (22)$$

$$y = \gamma_1(a_1x + b_1) + \gamma_2(a_2x^2 + b_2x + c_2) + \gamma_3(a_3x^3 + b_3x^2 + c_3x + d_3) \quad (23)$$

as the combination of linear and 2nd order non-linear and 3rd order non-linear function. Here, $\alpha_2 = 1 - \alpha_1$, $\beta_2 = 1 - \beta_1$, $\gamma_3 = 1 - (\gamma_1 + \gamma_2)$. Comparative discussion concerning (21), (22) and (23) are described in section 5.

C. Monthly Ratio^[5]

For example, if there is the monthly data of L years as stated below:

$$\{x_{ij}\} \quad (i = 1, \dots, L) \quad (j = 1, \dots, 12)$$

Where, $x_{ij} \in R$ in which j means month and i means year and x_{ij} is a shipping data of i -th year, j -th month. Then, monthly ratio \tilde{x}_j ($j = 1, \dots, 12$) is calculated as follows.

$$\tilde{x}_j = \frac{\frac{1}{L} \sum_{i=1}^L x_{ij}}{\frac{1}{L} \cdot \frac{1}{12} \sum_{i=1}^L \sum_{j=1}^{12} x_{ij}} \quad (24)$$

III. FORECASTING THE PRODUCTION DATA

A. Analysis Procedure

Sum total data of production data of X-ray image intensifier tube device and Diagnostic X-ray image processing apparatus from January 2010 to December 2012 are analyzed. These data are obtained from the Annual Report of Statistical Investigation on Statistical-Survey-on-Trends-in-Pharmaceutical-Production by Ministry of Health, Labour and Welfare in Japan.

The original data are accumulated for X-ray image intensifier tube device data and Diagnostic X-ray image processing apparatus data.

Analysis procedure is as follows. There are 36 monthly data for each case. We use 24 data (1 to 24) and remove trend by the method stated in 2.2. Then we calculate monthly ratio

by the method stated in 2.3. After removing monthly trend, the method stated in 2 is applied and Exponential Smoothing Constant with minimum variance of forecasting error is estimated. Then 1 step forecast is executed. Thus, data is shifted to 2nd to 25th and the forecast for 26th data is executed consecutively, which finally reaches forecast of 36th data. To examine the accuracy of forecasting, variance of forecasting error is calculated for the data of 25th to 36th data. Final forecasting data is obtained by multiplying monthly ratio and trend. Forecasting error is expressed as:

$$\varepsilon_i = \hat{x}_i - x_i \quad (25)$$

$$\bar{\varepsilon} = \frac{1}{N} \sum_{i=1}^N \varepsilon_i \quad (26)$$

Variance of forecasting error is calculated by:

$$\sigma_{\varepsilon}^2 = \frac{1}{N-1} \sum_{i=1}^N (\varepsilon_i - \bar{\varepsilon})^2 \quad (27)$$

B. Trend Removing

Trend is removed by dividing original data by, (21),(22),(23). The patterns of trend removal are exhibited in Table 1.

TABLE I. THE PATTERNS OF TREND REMOVAL

Pattern1	α_1, α_2 are set 0.5 in the equation (21)
Pattern2	β_1, β_2 are set 0.5 in the equation (22)
Pattern3	α_1 is shifted by 0.01 increment in (21)
Pattern4	β_1 is shifted by 0.01 increment in (22)
Pattern5	γ_1 and γ_2 are shifted by 0.01 increment in (23)

In pattern1 and 2, the weight of $\alpha_1, \alpha_2, \beta_1, \beta_2$ are set 0.5 in the equation (21),(22). In pattern3, the weight of α_1 is shifted by 0.01 increment in (21) which satisfy the range $0 \leq \alpha_1 \leq 1.00$. In pattern4, the weight of β_1 is shifted in the same way which satisfy the range $0 \leq \beta_1 \leq 1.00$. In pattern5, the weight of γ_1 and γ_2 are shifted by 0.01 increment in (23) which satisfy the range $0 \leq \gamma_1 \leq 1.00, 0 \leq \gamma_2 \leq 1.00$. The best solution is selected which minimizes the variance of forecasting error.

C. Removing trend of monthly ratio

After removing trend, monthly ratio is calculated by the method stated in 2.3.

D. Estimation of Smoothing Constant with Minimum Variance of Forecasting Error

After removing monthly trend, Smoothing Constant with minimum variance of forecasting error is estimated utilizing (16). There are cases that we cannot obtain a theoretical solution because they do not satisfy the condition of (15).

In those cases, Smoothing Constant with minimum variance of forecasting error is derived by shifting variable from 0.01 to 0.99 with 0.01 interval.

The intermittent demand data often include 0 data. If there are so many 0 data, there is a case we cannot calculate the theoretical solution of smoothing constant.

In that case, we add very tiny data which is not 0 but close to 0 that does not affect anything in calculating parameters (i.e. negligible small).

E. Forecasting AND Variance of Forecasting Error

Utilizing smoothing constant estimated in the previous section, forecasting is executed for the data of 25th to 36th

data. Final forecasting data is obtained by multiplying monthly ratio and trend. Variance of forecasting error is calculated by (27).

As we have made accumulated data case and tiny data close to 0 added case, we have the following cases altogether.

1. Non Monthly Trend Removal

(1) Accumulated Data

(2) Non Accumulated Data

(2-1) Forecasting from the Accumulated data (Accumulated forecasting data at time n - Accumulated data (at time $n-1$))

A. Pattern1 B. Pattern2 C. Pattern3 D. Pattern4 E. Pattern5

(2-2) Forecasting from the tiny data close to 0 added case

A. Pattern1 B. Pattern2 C. Pattern3 D. Pattern4 E. Pattern5

2. Monthly Trend Removal

(1) Accumulated Data

(2) Non Accumulated Data

(2-1) Forecasting from the Accumulated data (Accumulated forecasting data at time n - Accumulated data (at time $n-1$))

A. Pattern1 B. Pattern2 C. Pattern3 D. Pattern4 E. Pattern5

(2-2) Forecasting from the tiny data close to 0 added case

A. Pattern1 B. Pattern2 C. Pattern3 D. Pattern4 E. Pattern5

We can make forecasting by reversely making the data from the forecasting accumulated data, i.e., that is shown at (2-1).

Now, we show them at Figure1 through 6.

Figure 1,2 and 3 show the Non-monthly Trend Removal Case in X-ray image intensifier tube device.

It includes all cases classified above.

Figure 1 shows the Accumulated Data Case in Non-Monthly Trend Removal.

Figure 2 shows the Forecasting from the Accumulated Data Case in Non-Monthly Trend Removal.

Figure 3 shows the Forecasting from the tiny data close to 0 added case in Non-Monthly Trend Removal.

Table 2,3 and 4 show the corresponding variance of forecasting error for each Figure 1,2 and 3.

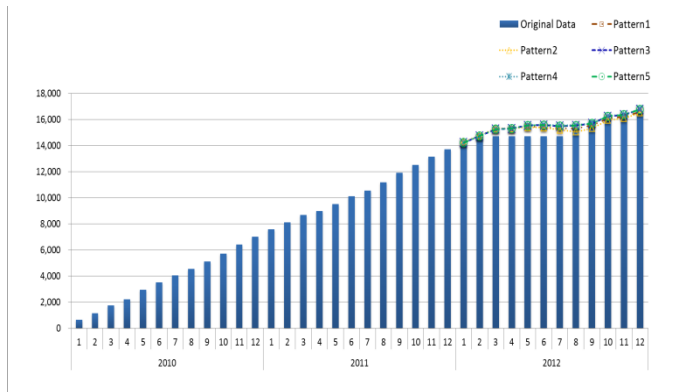


Fig. 1. Forecasting from the Accumulated Data Case in Non-Monthly Trend Removal (1-(1))

TABLE II. VARIANCE OF FORECASTING ERROR (1-(1))

Pattern1	Pattern2	Pattern3	Pattern4	Pattern5
582758.5	553598.6	655627.9	672911.8	655627.9
794	015	015	873	015

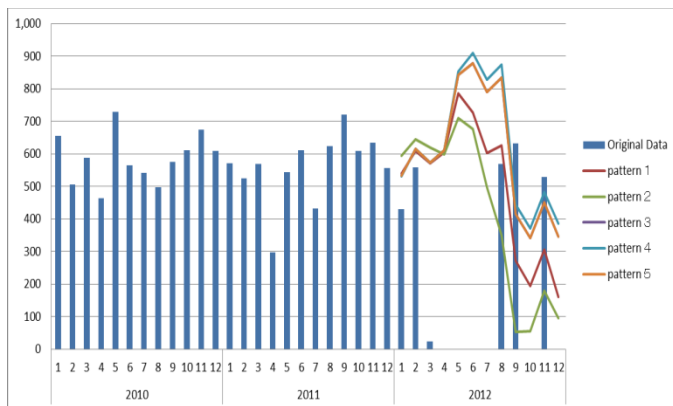


Fig. 2. Forecasting from the Accumulated Data Case in Non-monthly Trend Removal (1-(2-1))

TABLE III. VARIANCE OF FORECASTING ERROR (1-(2-1))

Pattern1	Pattern2	Pattern3	Pattern4	Pattern5
140940.0	183864.2	134016.6	134302.4	134016.6
69	572	212	864	212

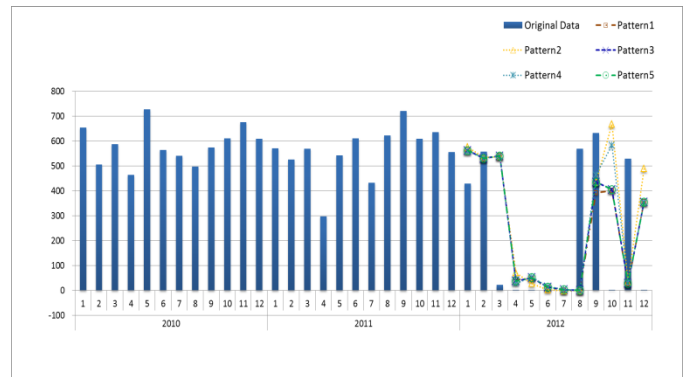


Fig. 3. Forecasting from the Tiny Data close to 0 Added case in Non-Monthly Trend Removal (1-(2-2))

TABLE IV. VARIANCE OF FORECASTING ERROR (1-(2-2))

Pattern1	Pattern2	Pattern3	Pattern4	Pattern5
110237.5	141410.2	108230.8	121685.9	108230.8
688	624	417	633	417

Next, we see the Monthly Trend Removal case.

Figure 4,5 and 6 show the Monthly Trend Removal Case in X-ray image intensifier tube device.

It includes all cases classified above.

Figure 4 shows the Accumulated Data Case in Monthly Trend Removal.

Figure 5 shows the Forecasting from the Accumulated Data Case in Monthly Trend Removal.

Figure 6 shows the Forecasting from the tiny data close to 0 added case in Monthly Trend Removal.

Table 5,6 and 7 show the corresponding variance of forecasting error for each Figure 4,5 and 6.

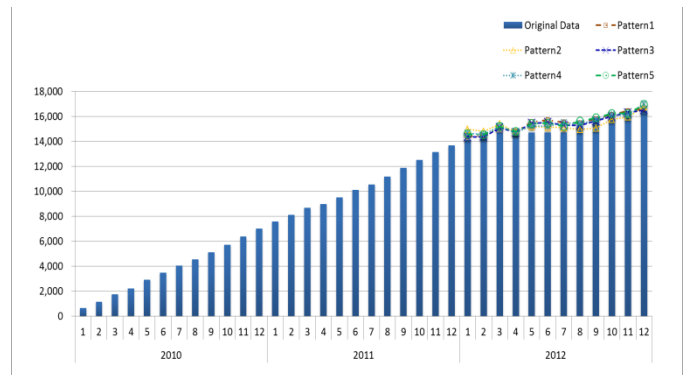


Fig. 4. Accumulated Data case in Monthly Trend Removal (2-(1))

TABLE V. VARIANCE OF FORECASTING ERROR (2-(1))

Pattern1	Pattern2	Pattern3	Pattern4	Pattern5
657839.2 024	505482.4 188	621118.7 598	636984.8 635	655587.0 73

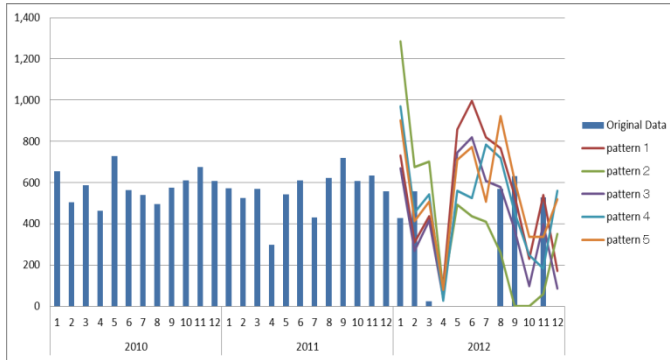


Fig. 5. Forecasting from the accumulated Data case in Monthly Trend Removal (2-(2-1))

TABLE VI. VARIANCE OF FORECASTING ERROR (2-(2-1))

Pattern1	Pattern2	Pattern3	Pattern4	Pattern5
153367.9 683	210960.3 255	139068.3 784	129896.7 705	103268.0 731

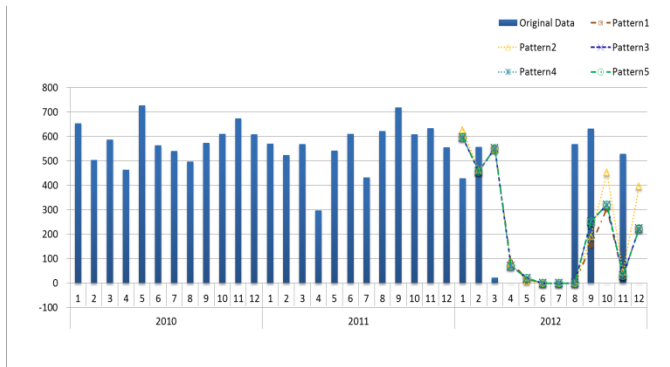


Fig. 6. Forecasting from the Tiny Data close to 0 Added case in Monthly Trend Removal (2-(2-2))

TABLE VII. VARIANCE OF FORECASTING ERROR (2-(2-2))

Pattern1	Pattern2	Pattern3	Pattern4	Pattern5
115474.9 994	131347.7 067	108078.5 346	108078.5 346	108078.5 346

Table 8 shows the summary for X-ray image intensifier tube device by the Variance of forecasting error.

TABLE VIII. SUMMARY FOR X-RAY IMAGE INTENSIFIER TUBE DEVICE

Name	X-ray image intensifier tube device	Monthly Trend Removal			Non Monthly Trend Removal		
		Accumulated Data	Forecasting Value – Accumulated Value	Tiny data close to 0 added case	Accumulated Data	Forecasting Value – Accumulated Value	Tiny data close to 0 added case
Minimum variance of Forecasting Error		505482.4188	103268.0731	108078.5346	553598.6015	134016.6212	108230.8417

Now, we proceed to the case of Diagnostic X-ray image processing apparatus. Figure 7,8 and 9 show the Non-monthly Trend Removal Case in Diagnostic X-ray image processing apparatus.

It includes all cases classified above.

Figure 7 shows the Accumulated Data Case in Non-Monthly Trend Removal.

Figure 8 shows the Forecasting from the Accumulated Data Case in Non-Monthly Trend Removal.

Figure 9 shows the Forecasting from the tiny data close to 0 added case in Non-Monthly Trend Removal.

Table 9,10 and 11 show the corresponding variance of forecasting error for each Figure 7,8 and 9.

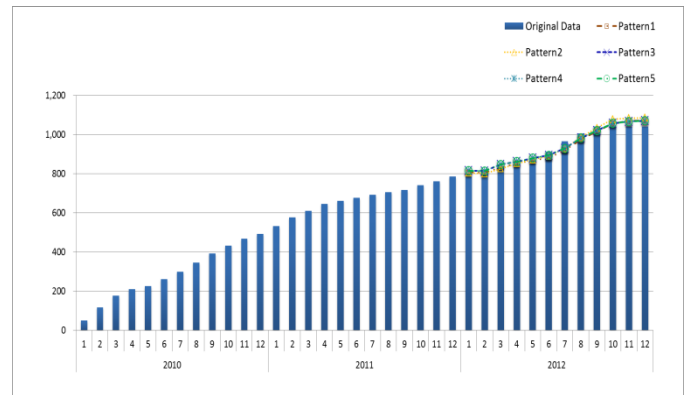


Fig. 7. Accumulated Data case in Non-Monthly Trend Removal (1-(1))

TABLE IX. VARIANCE OF FORECASTING ERROR (1-(1))

Pattern1	Pattern2	Pattern3	Pattern4	Pattern5
12144.26 114	13893.64 686	11033.83 677	11033.83 677	11033.83 677

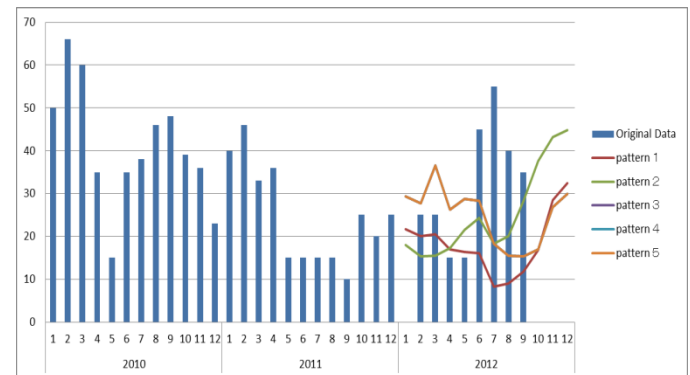


Fig. 8. Forecasting from the accumulated Data case in Non-Monthly Trend Removal (1-(2-1))

TABLE X. VARIANCE OF FORECASTING ERROR (1-(2-1))

Pattern1	Pattern2	Pattern3	Pattern4	Pattern5
642.6679 766	714.8801 978	515.2469 097	515.2469 097	515.2469 097

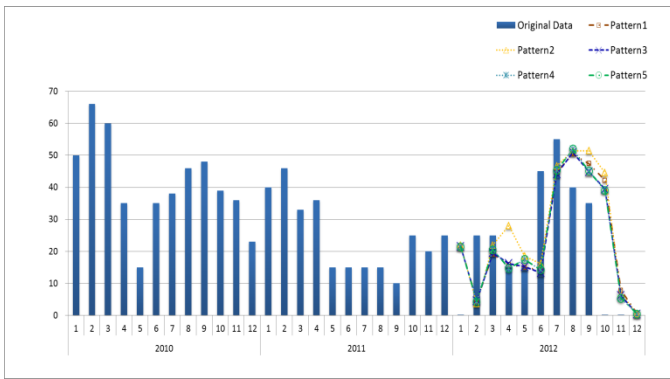


Fig. 9. Forecasting from the Tiny Data close to 0 Added case in Non-Monthly Trend Removal (1-(2-2))

TABLE XI. VARIANCE OF FORECASTING ERROR (1-(2-2))

Pattern1	Pattern2	Pattern3	Pattern4	Pattern5
365.3419	381.0283	345.9402	336.4640	336.4640
523	782	412	944	944

Next, we see the Monthly Trend Removal case.

Figure 10,11 and 12 show the Monthly Trend Removal Case in Diagnostic X-ray image processing apparatus..

It includes all cases classified above.

Figure 10 shows the Accumulated Data Case in Monthly Trend Removal.

Figure 11 shows the Forecasting from the Accumulated Data Case in Monthly Trend Removal.

Figure 12 shows the Forecasting from the tiny data close to 0 added case in Monthly Trend Removal.

Table 12,13 and 14 show the corresponding variance of forecasting error for each Figure 10,11 and 12.

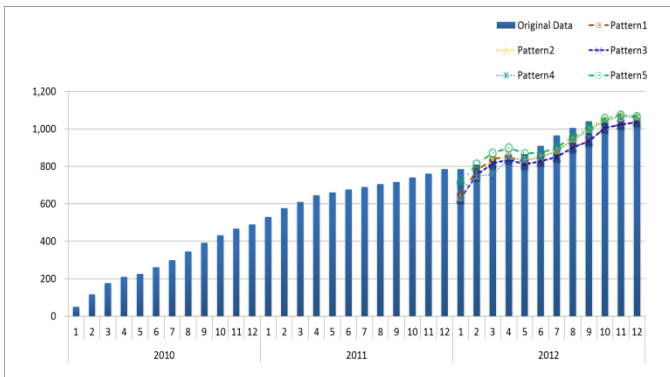


Fig. 10. Accumulated Data case in Monthly Trend Removal (2-(1))

TABLE XII. VARIANCE OF FORECASTING ERROR (2-(1))

Pattern1	Pattern2	Pattern3	Pattern4	Pattern5
13726.72	19516.74	15344.88	20527.68	13453.32
311	892	764	403	873

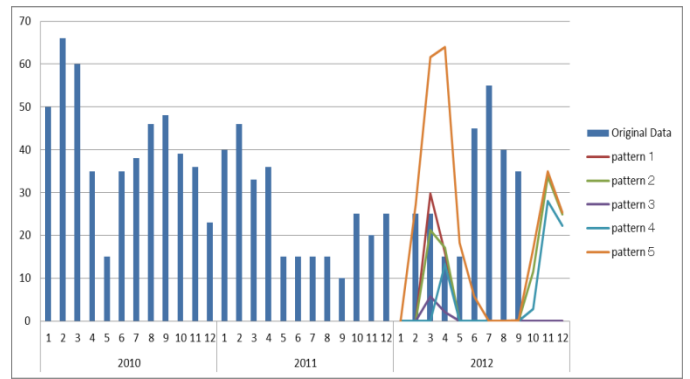


Fig. 11. Forecasting from the accumulated Data case in Monthly Trend Removal (2-(2-1))

TABLE XIII. VARIANCE OF FORECASTING ERROR (2-(2-1))

Pattern1	Pattern2	Pattern3	Pattern4	Pattern5
463.52944	804.97669	379.28200	697.531	1206.97
54	78	22	27	5423

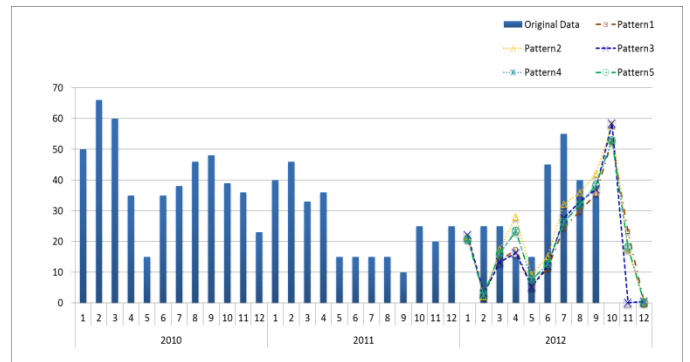


Fig. 12. Forecasting from the Tiny Data close to 0 Added case in Monthly Trend Removal (2-(2-2))

TABLE XIV. VARIANCE OF FORECASTING ERROR (2-(2-2))

Pattern1	Pattern2	Pattern3	Pattern4	Pattern5
603.303	579.916	585.7549	565.5003	565.5003
7984	3939	099	321	321

Table 17 shows the summary for Diagnostic X-ray image processing apparatus by the Variance of forecasting error.

TABLE XV. SUMMARY FOR DIAGNOSTIC X-RAY IMAGE PROCESSING APPARATUS

Name	Diagnostic X-ray image processing apparatus of other	Monthly Trend Removal		Non Monthly Trend Removal			
		Accumulated Data	Forecasting Value – Accumulated Value	Tiny data close to 0 added case	Accumulated Data	Forecasting Value – Accumulated Value	Tiny data close to 0 added case
Minimum variance of Forecasting Error		13453.32873	379.2820022	565.5003321	11033.83677	515.2469097	336.4640944

IV. DISCUSSION

In the case of X-ray image intensifier tube device, Monthly Trend Removal case was better than Non-Monthly Trend

Removal case. This time series had a rather clear monthly trend and the result had reflected them. Forecasting from the accumulated data case (2-(2-1)) was better than those of the tiny data close to 0 added case (2-(2-2)) in this Monthly Trend Removal case for X-ray image intensifier tube device. On the other hand, in the case of Diagnostic X-ray image processing apparatus, Non-Monthly Trend Removal case was better than Monthly Trend Removal case. The time series of Diagnostic X-ray image processing apparatus does not have clear monthly trend. Forecasting from the tiny data close to 0 added case (1-(2-2)) was better than those of Accumulated data case (1-(2-1)). By the way, forecasting of accumulated data (1-(1), 2-(1)) shows rather good result. It can be used as one of the tool to decide when and how much volume to procure the materials etc.. It can be utilized as a new method to procure in supply chain management.

V. CONCLUSION

The needs for intermittent demand forecasting are increasing. In this paper, a new method for cumulative forecasting method was proposed. The data was cumulated and to this cumulated time series, the new method was applied to improve the forecasting accuracy. The forecasting result was compared with those of the non-cumulative forecasting method. The new method shows that it is useful for the forecasting of intermittent demand data. Forecasting from the accumulated data case (2-(2-1)) was better than those of the tiny data close to 0 added case (2-(2-2)) in this Monthly Trend Removal case for X-ray image intensifier tube device. On the other hand, in the case of Diagnostic X-ray image processing

apparatus, forecasting from the tiny data close to 0 added case (1-(2-2)) was better than those of Accumulated data case (1-(2-1)). Among them, forecasting of accumulated data (1-(1), 2-(1)) shows rather good result. It can be used as one of the tool to decide when and how much volume to procure the materials etc.. It can be utilized as a new method to procure in supply chain management.

VI. FUTURE WORKS

It is our future works to investigate much further cases to confirm the effectiveness of our new method. The effectiveness of this method should be examined in various cases.

REFERENCES

- [1] Box, G.E.P., Jenkins, G.M.& Reinsel, G.C., Time Series analysis: forecasting and control, Wiley, 4th edn., 2008.
- [2] Lydia Shenstone and Rob J. Hyndma, "Stochastic models underlying Croston's method for intermittent demand forecasting", Journal of Forecasting, 24:389-402, 2005.
- [3] Kenji Tanaka, Yukihiro Miyamura and Jing Zhang, "The Cluster Grouping Approach of Sales Forecasting Model for Book Publishing", International Journal of Japan Association for Management Systems, Vol.4, No.1, pp.31-35, 2012.
- [4] Nguyen Khoa Viet Froung, Shin Sangmun, Vo Thanh Nha, Kwon Ichon, "Intermittent Demand forecasting by using Neural Network with simulated data", Proceedings of the 2011 International Engineering and Operations Management Kuala Lumpur, Malasia, pp.723-728, 2011.
- [5] Kazuhiro Takeyasu and Keiko Nagata, "Estimation of Smoothing Constant of Minimum Variance with Optimal Parameters of Weight", International Journal of Computational Science Vol.4, No.5, pp. 411-425, 2010