

# Designing of Hydraulically Balanced Water Distribution Network Based on GIS and EPANET

RASOOLI Ahmadullah  
Faculty of Engineering  
Graduate University of The Ryukyus  
Okinawa, Japan

KANG Dongshik  
Information Engineering  
Graduate University of The Ryukyus  
Okinawa, Japan

**Abstract**—The main objectives of this paper are, designing and balancing of Water Distribution Network (WDN) based on loops hydraulically balanced method as well as using Geographical Information System (GIS) methodology with the contribution of EPANET. GIS methodology is used to ensure WDN's integrity and skeletonized a proper and functional WDN by using Network Analyst utilizing the geometric network and topology network by hierarchical geo-databases. The problem is to make WDN hydraulically balanced by applying WDN balancing method. For that reason, we have analyzed water flows in each pipe and performed the iterations process on loops, in order to make the algebraic summation of head loss " $h_f$ " around any closed loop zero, in case, the summation of pipe flows must be equal to the flow amount entering or leaving the system through each node. At each iteration, reasonable changes occurred at pipes flow until the head loss has become very small or fixed zero as (optimizes correction) by using excel sheet solver. Since this method is confirmed to be effective, simulations were done by using GIS and EPANET water distribution platform. As a result, we accomplished hydraulically balanced WDN. Finally, we have analyzed and simulated hydraulics parameters for the targeted area in Kabul city. Thus, we successfully determined the hydraulics state of parameters around the network as a positive result. It is worth mentioning that, Hardy-cross method is being used for approaching more precise optimized correction and consequences concerning hydraulically-balanced and optimal WDN. This method can be done for complex loops WDN as well; the advantage of the method is simple math and self-correction. Managers and engineers who work in the field of water supply this methodology has been recommended as the more advantageous workflow in planning water distribution pattern.

**Keywords**—Geographical Information System (GIS); Water Distribution Network (WDN); Hydraulics; EPANET

## I. INTRODUCTION

To manage and control WDN we need to create Geo-database and knowledge-base in order to store water background data layers with features in ArcGIS and manage WDN. Therefore, GIS is comprehensive and multifunctional computer-based software being used in water transmission and distribution systems in modern and systematic water supply. However, it is the best application to manage, manipulate and maintain geospatial data and to develop and sustain asset management for today's water utilities in worldwide. Though for the targeted area there was no previous data available on water supply, no distribution lines, and service connection information as well as with no service population and sewerage system network the entire situation is unmapped.

We have produced three hierarchical Geo-databases separately [1]. The Geo-database structures indicate main, geometric network and topology Geo-databases consisted of feature data sets. Water supply background data (vector data and raster data) collected from various source that working for shoulder to shoulder for Kabul city water supply extension. We designed a proper WDN created in GIS then imported to EPANET to be analyzed and simulated in order to approach the objectives and successful consequences.

The commonly network has been contained of physical and non-physical components and features such as pipes, nodes and reservoirs with pumps and valves-types and non-physical describes the behavior and operational aspects of a distribution system. Since, GIS project scenarios imported to EPANET in (.inp) format in order to carry out simulation and find various WDN's parameters state.

In this paper, we have considered two closed-loops of the network using two fundamental hydraulic principles such as continuity and energy conservation equations. The statement of this valuable method is first the sum of pipe flows into and out of a node equals the flow entering or leaving the system through each node applied to all pipes. And second, the algebraic sum of pressure drops around a closed loop must be zero we applied it to all the nodes. Some of the given parameters include water demand at each node, diameter of pipe and pipe length as well as pressure at the first node and pipe roughness. We need to find corrected water flows at pipes, this happens by reducing head loss around loops, finally we will also get the pressure at all nodes.

## II. STUDY SITE

Water supply conditions in Kabul city are serious, and water availability will be the most critical constraint to the development of the city. There are lack and shortages of water not only for irrigation but also for domestic; the entire current water supply in Kabul depends exclusively on local ground-water resources. However, surface water transferring is needed to be extended and developed from Shatoot dam located on Maidan River and also Gulbahar dam located on Panjshir river through a proper treatment plant process in order to supply potable water to city's population. However, water supply is being extended and developed in the last decay in order to meet present-day population demand; water consumption is increased due to the rise of population and economic development in the city. Therefore, the local water resources are not sufficient for current demand to cover the

whole users. Local groundwater needs to be recharged naturally or artificially.

Population prediction is one of the necessary factors for designing water supply systems. Therefore, population should be estimated precisely to continuously supply increasing water demand for the community. Population projection and growth rate in percentage from 2002 until 2032 is shown in “Fig. 1”. The estimated potential of Kabul groundwater is approximately 44 million (m<sup>3</sup>) per year according to the current water study. The estimated groundwater potentials are as presented in “TABLE1”.

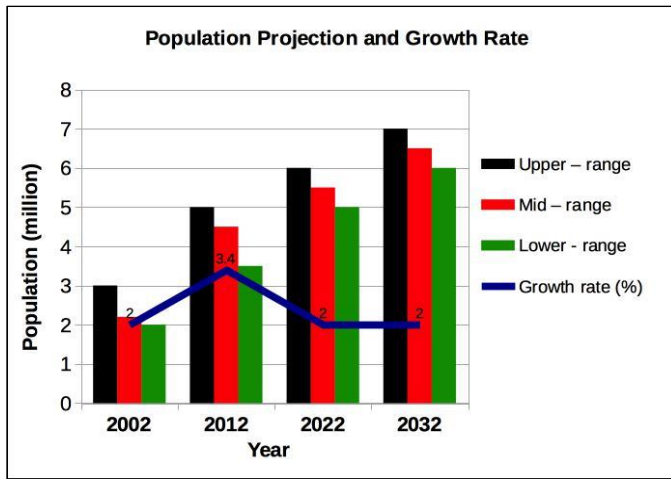


Fig. 1. Population projection and growth rate in percentage for Kabul city based on upper, middle and lower range of statistics data

TABLE I. AVAILABLE POTENTIAL OF GROUND-WATER OF KABUL CITY

Aquifers' name	Water resources availability
Logar	24.64
Allaudin and upper Kabul	12.48
Afshar	3.65
Lower Kabul	3.65
<b>Total</b>	<b>44.42</b>

So that this is the targeted WDN located in eastern part of the city, called (Khoshal Khan Mena) district five on the left side of “Fig. 2”. And here is the reference regarding Kabul city water supply system that has evaluated since 1992-94 civil war [1].

### III. METHODOLOGY

GIS is the best application as knowledge-base and spatial database to manage, manipulate and analyze geospatial data to develop and sustain asset management for today's water utilities. Geographical Information System can be used as a key tool for making WDN. The process of creating a systematic and functioning water distribution network has been addressed in our paper under the topic of Designing an Optimal Water Distribution Network Using GIS and EPANET, Kabul city [2].

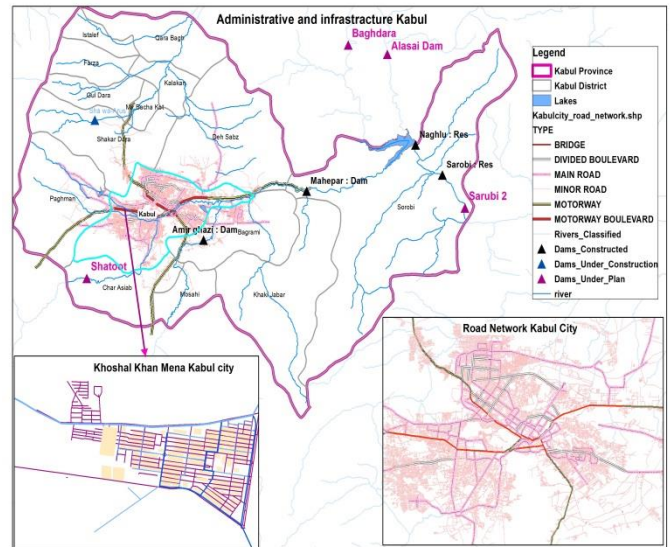


Fig. 2. Infrastructure dam sites of Kabul province and city road network

#### A. Geo-database Structures of WDN in ArcGIS

In this step, an actual Geo-database structure has been created contained necessary input data such as background data as raster and vector (e.g. both existing and future urban planning with public utility pipelines, population, buildings, topographical survey, edges and junction points etc. For making an optimal WDN the Geo-database model is a generic model for geographic features and attributes that support a wide variety of object relations and behavior. Improvement, manage, and control of water supply systems (WSS) is essential through Geo-database and knowledge-base ArcGIS-based utilizing necessary data on water supply even for other utilities, these includes water supply background data (e.g. urban development plan, buildings and stellate image of the community), population, roads and pipes (e.g. water mains, sub-mains, and branches). With other WSN parameters which are required for WSN, it can be seen bellow in the hierarchical Geo-databases' structures that have been produced for Kabul city water supply as shown in “Fig. 3”.

Regarding the bellow hierarchical Geo-database structures kindly refer to our journal paper, Geo-database and Knowledge Base in Arc GIS are organized and contains the required data (raster and vector) as a national level for Kabul basin [3].

#### B. Input Data

Input data contains satellite images that need to be extracted and vector data such as Infrastructure information, existing and planned public utility pipelines. With diameter and length, customer's information with coordinates, population, edges and nodes points [4]. And other necessary WDN's background related data for a correct affordable improvement control and maintain of the system.

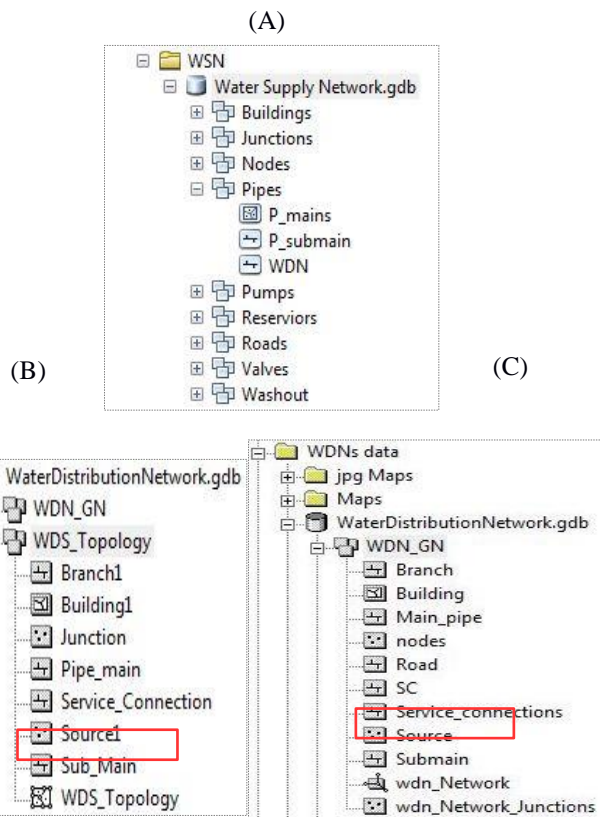


Fig. 3. Prepared Geo-database structures for Kabul city water Distribution network. GDB-main, GDB-Topology and GDB-GN for WDN respectively

C. Network Analysis

a) Topology Analysis

Topology Geo-database has been created from existing features due to clarify edges and nodes layers connectivity by topology analysis in order to make ensure concerning data integrity and containment with its adjacency and coincidence. An example of topology analysis is shown in the “Fig. 4”.

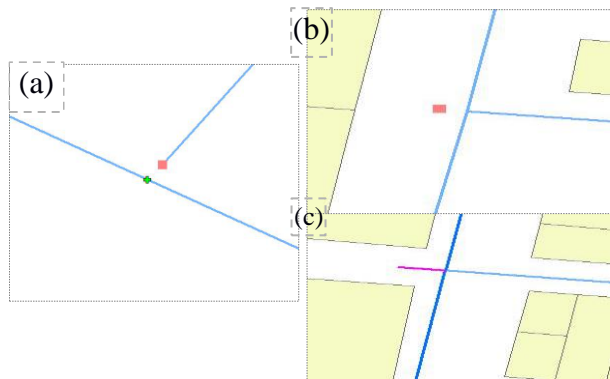


Fig. 4. An example of topology analysis validated data and fixed errors, figures represent extend, trim and the node need to be replaced

Topology in ArcGIS fixes errors in data and it is the process to describe and maintain special relationships of map features.

b) Geometric Network

This utility network can also be used for other public utilities and services such as electrical, gas pipe lines, sewer and storm networks, telecommunication transmission and distribution networks either for loops and branches systems. These components can be modeled and analyzed by the help of network analyzes. But need a sophisticated GIS application to analyze and model an optimal WDN. Basically, GN is performed in Arc-Catalog tree. Once a geometric network is modeled, it is possible to benefit from performing various network analyses. For instance, in “Fig. 5”, (a) we found the shortest path between (P1) and (P2), while (b) represents downstream of it’s related node.

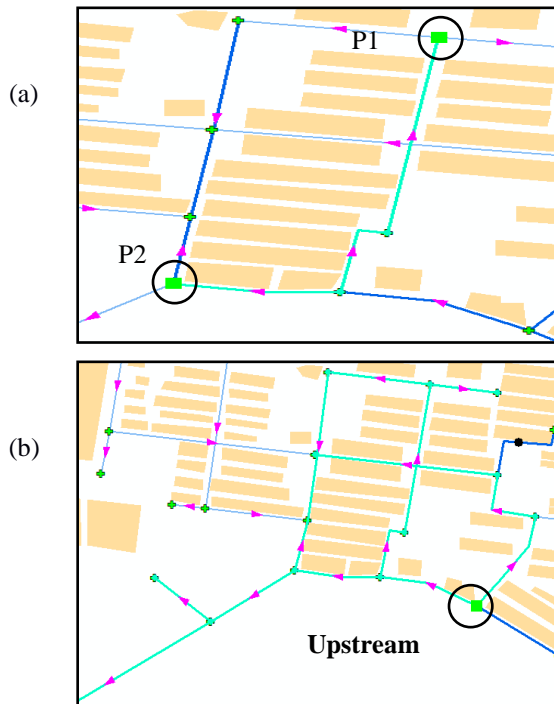


Fig. 5. (a) Defines an example of geometric network short path between (P1) and (P2), while (b) represents downstream of related node

c) Distribution Network Skeletonization

GIS application provides functions for development and preparation of accurate spatial digital information as input into data for the network design optimization model, which included network layout, connectivity, pipe characteristics and cost, pressure gradients, demand patterns, cost analysis, network routing and allocation, and effective color graphic display of results [5].

The following example of network layout was skeletonized in order to cover a part of western Kabul city in shown in “Fig. 6”.

Attribute table of the network elements are consisted of junctions and pipes. An example is shown in the “TABLE2 and TABLE3”.

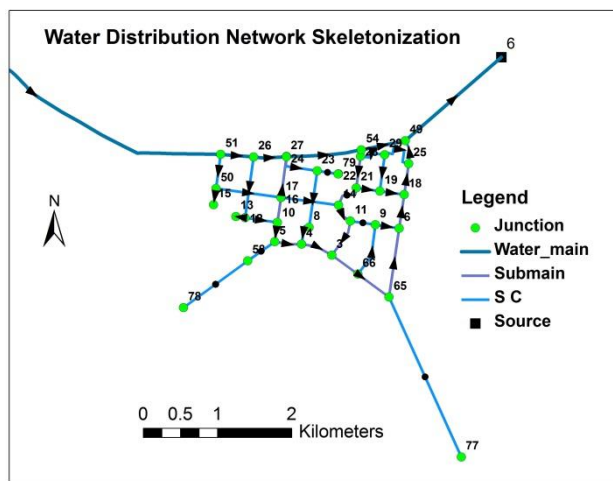


Fig. 6. It is illustrating water distribution network flow paths and WDN Skeletonization

TABLE II. ATTRIBUTE TABLE OF JUNCTION

A	B	C	D	E	F
ID	Node	X-Coord	Y-Coord	Elv	Demand
1	38	69.12	34.51	1822	50
2	37	69.11	34.52	1823	10
3	12	69.11	34.52	1827	10
4	14	69.10	34.52	1841	14
5	16	69.10	34.52	1831	10
6	17	69.12	34.52	1821	1
7	19	69.10	34.52	1860	20
8	20	69.10	34.52	1835	25
9	21	69.11	34.52	1750	7
10	22	69.11	34.52	1828	3
11	23	69.11	34.52	1822	5
12	24	69.09	34.52	1865	1
13	29	69.11	34.52	1829	1
14	31	69.11	34.52	1838	1.5
15	25	69.10	34.52	1835	12

TABLE III. ATTRIBUTE TABLE OF PIPES

OBJECTID*	Shape*	material	Diameter	Roughness	Enabled	Length_m
9	Polyline	pvc	150	0	True	364
13	Polyline	pvc	200	0	True	429
15	Polyline	pvc	200	0	True	442
16	Polyline	pvc	200	0	True	955
18	Polyline	pvc	150	0	False	394
23	Polyline	pvc	150	0	True	281
24	Polyline	pvc	150	0	True	532
25	Polyline	pvc	200	0	True	458
26	Polyline	pvc	200	0	True	422
12	Polyline		150	0	True	282
28	Polyline		200	0	True	899
22	Polyline	<Null>	200	0	True	323
32	Polyline	<Null>	200	0	True	937
34	Polyline	<Null>	200	0	True	88

d) Set of Geo-Database Model in GIS

The model illustrates, the methodology of creating WDN through GIS software, it is a set of Geo-database model objects with relations and behaviors for WDN made of object classes, layers includes (polygons, lines and points) as shown in “Fig. 7” .

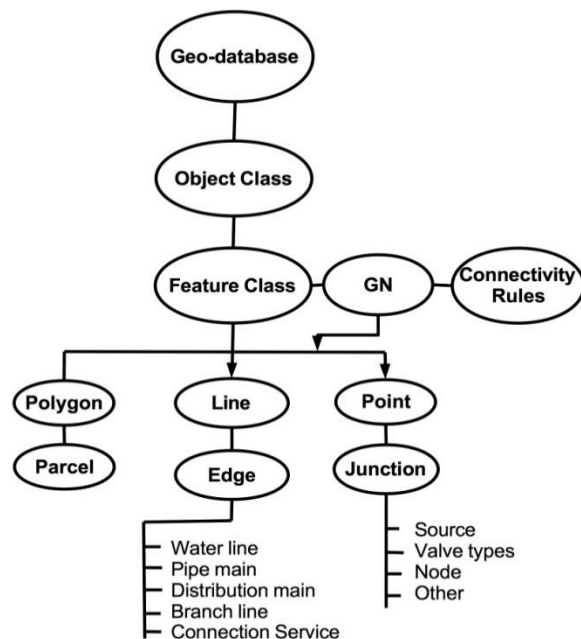


Fig. 7. A set of Geo-database model objects with relations and behaviors for water distribution network through GIS

IV. HYDRAULICS ANALYSIS

A. Statements of the Method

- Continuity Formula

The sum of pipe flows amount into and out of a node equals to the flow amount entering or leaving the system through each node. Therefore, we have had the following equation:

$$Q = Q_1 + Q_2 \tag{1}$$

Where, Q = Total inflow,  $Q_1 + Q_2$  = Total outflow

- Energy Conservation Formula

The algebraic Summation of head loss “ $h_f$ ” around any closed loop is zero. Therefore,

$$\sum h_f(Loop) = 0 \rightarrow \sum K(Q + \Delta Q)^n = 0 \tag{2}$$

Where,

Q= Actual inflow,  $\Delta Q$ = Correction

K= Head loss coefficient, n= Flow exponent.

The general relationship must be maintained between discharges and head-losses for each pipe in loops by the following formula:

$$h_f = K.Q^n \tag{3}$$

These pressure heads loss equations have commonly been using by EPANET hydraulic solutions.

- Darcy-Weisbach Equation

$$K = \frac{8fL}{g\pi^2 D^5}, n= 2 \quad (4)$$

- Exponential friction Equation (Hazen-William)

$$K = \frac{10.67}{C^{1.85} D^{4.87}}, n= 1.85 \quad (5)$$

$$\Delta Q = \frac{-\sum h}{2\sum h/Q} \quad (6)$$

Where,

C= Equivalent resistance,

D= Internal pipe diameter

L= Pipe length,

g= Gravitational acceleration, f= Friction factor.

### V. METHOD PROCEDURE AND APPROACH

D. Divided the network into loops (e.g. loop1, loop2, etc)

E. For each loops done the following steps

1) Assumed flow, flow direction in pipes, flow direction for loops whether positive (clockwise) or negative (counter-clockwise) applying continuity equation at each node. Estimated pipe flows are connected with iteration until head losses in the clockwise direction are equal to the counter-clockwise direction in each loop.

2) Need to calculate equivalent resistance "K" for each pipe based on given parameters as demand at each node, pipe diameter and pipe length, temperature with pipe material.

3) Calculate  $h_f = K \cdot Q^n$  for each pipe. Retain sign from "(1)" and compute sum for loops " $h_f$ ".

4) Compute  $|h_f/Q|$  for each pipe and sum for each loop  $\sum |h_f/Q|$ .

5) Calculate correction by the following formula

$$\Delta Q = -\sum h_f / (n \sum |h_f/Q|).$$

6) Applying correction to  $Q_{new} = Q + \Delta Q$

7) Repeat step" (3) to (6)" until  $\Delta$  become very small.

8) Ultimately solve for pressure at each node using energy method.

The above method is known as Hardy-cross method in hydraulics and this method is applicable to closed loop systems [6]. Hardy-Cross (1885-1951), who was a professor of civil engineering at the university of Illinois, Urbana-Champaign, presented in 1936 a method for the analysis of looped pipe network with specified inflow and outflows ( fair et al., 1981) [7], [8].

We have made the effort to solve the problems addressed in the "Fig. 8".

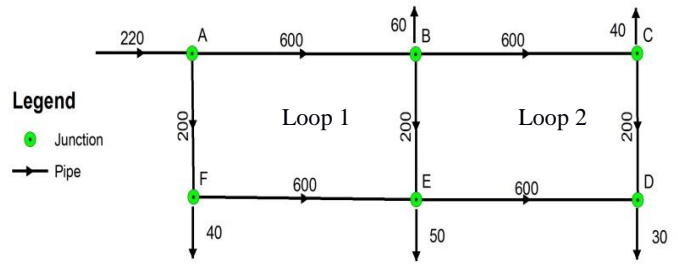


Fig. 8. Two closed-loops WDN contains of pipes (p) and nodes or junction (ju) with given pipes length, estimated flow and demand at each node as well as water flows and water flows direction at each pipe

Pipe roughness size equals to 0.06mm and pressure heads elevation at point (A) is given 70m other characteristics of the network are shown in as followings "Table4".

TABLE IV. PIPE LENGTH IN METER AND DIAMETER IN MM

Pipe	AB	BC	CD	DE	EF	AF	BE
Length (m)	600	600	200	600	600	200	200
Diameter (mm)	250	150	100	150	150	150	100

In the next table elevation of each pipe node has been estimated as followings shown in "Table5".

TABLE V. PIPE NODES ELEVATION IN METER

Nodes	A	B	C	D	E	F
Elevation (m)	30	25	20	20	22	25
Demand	0	60	40	30	50	40

Therefore, based on the above-given hydraulics parameters we are going to determine unknown parameters in the network such as optimized flow in pipes, head losses applying energy equation and finding the unknown pressure at nodes as well as making loops hydraulically balanced. Thus, performing iterations process for optimizes correction as followings.

### VI. ITERATIONS PROCESS

Computing f, k and h (m), h/Q for each pipe and then finding summation of h(m), h/Q around each loop shown in "Table6".

To know corrected flow ( $Q_{new}$ ) for each pipe around loops need to calculate  $Q (L/s) + \Delta Q$ . The correction can be found as follows for instance for we found for the first loop:

$$\Delta Q = \frac{-\sum h}{2\sum h/Q} = \frac{-(-33.91)}{2 \times 1191.82} = 0.0143 = 14.23L/s.$$

TABLE VI. ITERATIONS PROCESS

	pipe	Q (L/s) (Q1+Q2)	Re(x 105)	f	K	hf(m)	hf/Q (m/m3/s)
1st iteration	AB	120	5.41	0.0157	797	11.48	95.64
	BE	10	1.31	0.0205	33877	3.39	338.77
	EF	-60	4.51	0.0172	11229.1	-40.42	673.75
	FA	-100	5.63	0.0162	336.6	-8.36	83.66
						$\Sigma$ -33.91	1191.82
	BC	50	3.76	0.0174	11359.7	28.4	567.98
	CD	10	1.13	0.0205	33877	3.39	338.77
	DE	-20	1.5	0.0189	12338.9	-4.94	246.78
	EB	-24.23	2.73	0.0189	31232.9	-18.34	756.77
						$\Sigma$ -8.51	$\Sigma$ 1910.3
2nd iteration	AB	134.23	5.41	0.0156	791.9	14.27	106.3
	BE	26.46	1.13	0.0188	31067.7	21.75	822.05
	EF	-45.77	4.51	0.0175	11424.9	-23.93	522.92
	FA	-85.77	5.63	0.0164	846.9	-6.23	72.64
						$\Sigma$ 5.86	$\Sigma$ 1523.92
	BC	47.77	3.76	0.0174	11359.7	25.93	542.7
	CD	7.77	1.13	0.0205	33877	2.05	263.3
	DE	-22.23	1.5	0.0189	12338.9	-6.1	274.3
	EB	-24.54	2.73	0.0189	31232.9	-18.81	766.5
						$\Sigma$ 3.07	$\Sigma$ 1846.7
3rd iteration	AB	132.31	5.41	0.0157	797	13.95	105.45
	BE	25.37	1.31	0.0205	33877	21.8	859.46
	EF	-47.69	4.51	0.0172	11229.1	-25.54	535.53
	FA	-87.69	5.63	0.0162	836.6	-6.43	73.36
						$\Sigma$ 3.78	$\Sigma$ 1573.81
	BC	47.77	3.76	0.0174	11359.7	25.93	542.68
	CD	7.77	1.13	0.0205	33877	2.05	263.31
	DE	-22.23	1.5	0.0189	12338.9	-6.1	274.26
	EB	-23.34	2.73	0.0189	31232.9	-17.01	745.29
						$\Sigma$ 4.09	$\Sigma$ 1825.5

The corrected flows obtained after iterations process and have been shown in the “Table7”. f is not calculated in some iteration so that K is similar, for more precision it can be changed. Therefore, now it is possible to find unknown pressure heads at nodes though the final values of head losses like in “Table8”.

TABLE VII. THE CORRECTED FLOWS

	pipe	Q (L/s)	Corrected Q (L/s)
1st iteration	AB	120	134.23
	BE	10	24.23
	EF	-60	-45.77
	FA	-100	-85.77
	BC	50	47.77
	CD	10	7.77
	DE	-20	-22.23
2nd iteration	EB	-24.23	-26.46
	AB	134.23	132.31
	BE	26.46	24.54
	EF	-45.77	-47.69
	FA	-85.77	-87.69
	BC	47.77	46.94
	CD	7.77	6.94
3rd iteration	DE	-22.23	-23.06
	EB	-24.54	-25.37
	AB	132.31	131.11
	BE	25.37	23.34
	EF	-47.69	-48.89
	FA	-87.69	-88.89
	BC	47.77	46.5
	CD	7.77	6.5
	DE	-22.23	-23.5
	EB	-23.34	-24.61

TABLE VIII. PRESSURE HEADS AT EACH NODE IN (M)

Node	Pressure heads in mater
A	70-30=40
B	70-25-13.7=31.3
C	70-20-24.74-13.7=11.56
D	70-20-13.7-24.74-1.52=10.04
E	70-22-6.59-26.67=14.74
F	70-25-6.59=38.41

The result also compared in EPANET software that carried out in 10 trails with no error, the simulation is shown above. Therefore, we propose EPANET for analyzing a big and complex WDN. By using EPANET we are able to analyze WDN precisely and avoid time-consuming.

### VII. EPANET ANALYSIS

This paper moreover presents analysis through EPANET too for designing an optimal and hydraulically balanced water distribution network. EPANET is a free Windows computer program developed by the U.S. Environmental Protection Agency (EPA). EPANET performs simulations of hydraulic and water quality behavior within pressurized pipe networks, such as a city water supply system. A network can consist of pipes, pipe junctions, pumps, valves, storage tanks, and reservoirs [9]. For our case in two closed loops pipe network we put necessary basic description of the network placed in a simple text file format so I address how to import a network to EPANET, to import a text file it must be contained in a list of node ID's with their coordinates as well as a list of link ID's and their connecting nodes.

Note that only junctions and pipes are represented. Other network elements, such as reservoirs and pumps, can either be imported as junctions or pipes and converted later on or simply be added in later on. The user is responsible for transferring any data generated from a CAD or GIS package into a text file with the format shown below [9]. EPANET tracks the flow of water in each pipe, the pressure in each node, and the height of water in each tank or reservoir during a simulation period consisting of multiple time steps. Consequently, how to organize project's scenario looks like bellow:

[Junctions]

jid	Elev.	Demand
1	30	0
2	25	60
3	20	40
4	20	30
5	22	50
6	25	40

[Coordinates]

jid	x-coord	Y-coord
1	-11264937.393	5371052.628
2	-11264472.173	5371051.188
3	-11264011.274	5371052.628
4	-11264009.834	5370817.857
5	-11264470.747	5370818.241
6	-11264934.549	5370822.302

[Pipes]

jid	Nodel1	Nodel2	Length	Diam	Roughness
1	1	2	600	250	0.006
2	2	3	600	150	0.006
3	3	4	200	100	0.006
4	1	6	200	150	0.006
5	6	5	600	150	0.006
6	2	5	200	100	0.006
7	5	4	600	100	0.006

[Tanks]

jid	Elev.	Diameter	InitLvl	MaxLvl	Volume
1	60	150	10	90	0

In addition, other network elements, like pumps and reservoirs can either be imported as junctions or pipes. The principle of EPANET network analysis is based on the continuity equation and energy conservation theory. The purpose of the bellow network is to supply water at adequate pressure and flow. The following two closed network illustrates assumed flows at each pipe and demand at nodes before balancing loops shown in "Fig. 9".

The result of analyzed and obtained by EPANET platform effectively as well as the status of the hydraulics parameters has been determined and shows the network is in a very good condition. Hydraulic status is balanced after 10 trails as shown in "Fig. 10".

EPANET can use any one of the three popular forms of the head-loss formula the Hazen-Williams formula, the Darcy-Weisbach formula mentioned above, or the Chezy-Manning formula.

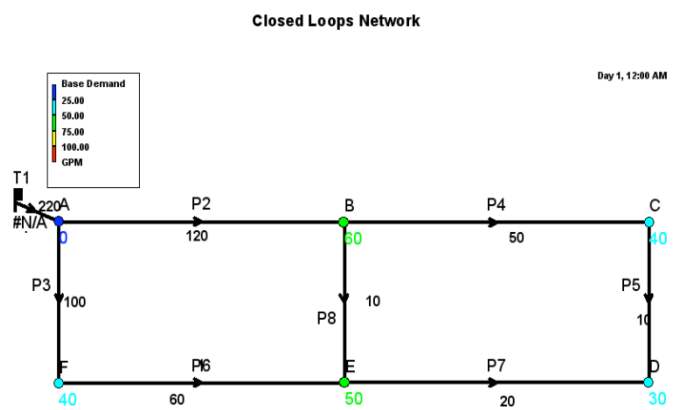


Fig. 9. Before hydraulic analysis

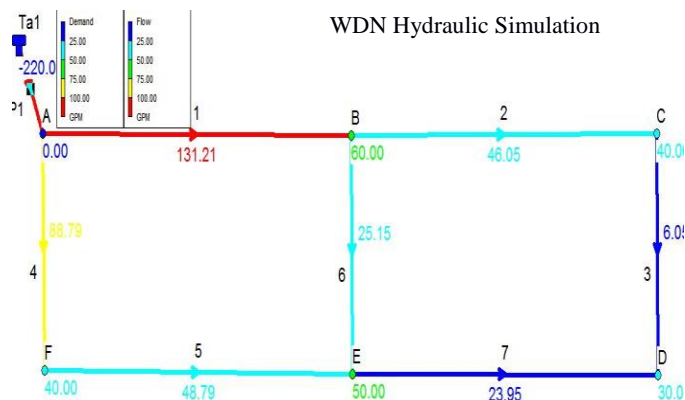


Fig. 10. After analysis and optimizes correction of balancing loops through EPANET platform

In order to, analyze EPANET needs the input files such as nodes and pipe description as input data, see [10, 11, 12] for the input and output data. Determined the hydraulics parameters of the targeted area by the use of EPANET, so that the simulation is shown in "Fig. 11".

Finally, the flow chart of the method relations is shown in "Fig. 12". This will help readers to understand the methodology easily.

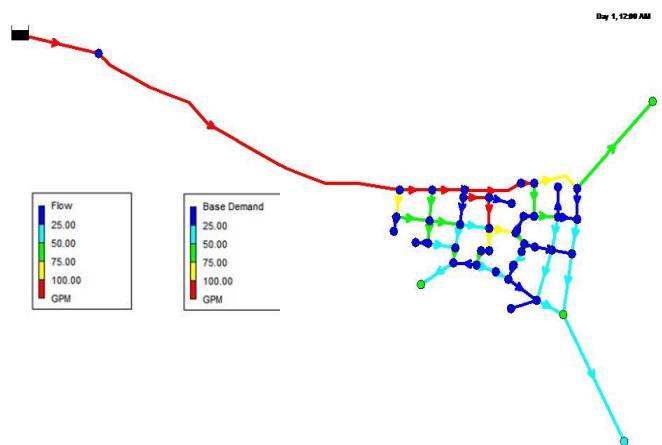


Fig. 11. Water Distribution Network of the targeted area

research for the WDN. This work hopes to be a good step toward further understanding this important issue.

#### ACKNOWLEDGMENT

This work presents a part of a Master's Degree research work carried out by Rasooli Ahmadullah under the supervision of Professor Kang Dongshik.

I would like to thank Japan International Cooperation Agency (JICA), PEACE Project, the Project for the Promotion and Enhancement of the Afghan Capacity for Effective Development (PEACE), for letting me fulfill my dream of being a student at University of The Ryukyus and providing me the necessary fund for the paper. Also, my grateful thanks are extended to Engineering Faculty staff, University of The Ryukyus, for their cooperation during my academic life.

Finally, I am thankful to my family for their kind support, love, and encouragement. I dedicate this work to them.

#### REFERENCES

- [1] P.G. Nembrini,1 P. Jansen,2 J.F. Pinera,2 O. Bernard,2 R. Luff,3 M. Weber,4 and M.J. Elliot4, Kabul Water Supply October 2002, Occasional paper No. 7. Evolution since the 1992-94 Civil War.
- [2] RASOOLI Ahmadullah and KANG Dongshik. 'Designing an Optimal Water Distribution Network Using GIS and EPANET, Kabul city'. The Institute of Electronics, Information and Communication Engineers (IEICE) September 2015 Sendai, Japan.
- [3] RASOOLI Ahmadullah, KANG Dongshik, (IJACSA) International Journal of Advanced Computer Science and Applications, Vol. 6, No. 2, 2015. UK, London.
- [4] Martínez-Solano, F. Javier; Pérez-García, R. & Iglesias-Rey, P.L, VALENCIA. Water Mains Creation Using GIS. 5th AGILE Conference on Geographical Information Science, Palma (Balearic Islands, Spain) April 25th- 27th 2002.
- [5] John W. Labadie Margaret T. Herzog Civil Engineer / GIS Coordinator. Optimal Design of Water Distribution Networks with GIS. Dept. of Civil Engineering Colorado State University, Fort Collins, Colorado 80523-1372.
- [6] A. RASOOLI Ahmadullah, B. KANG Dongshik, Construction of hydraulically balanced water distribution network. ICIBMS, OIST. Journal of Information and Communication Engineering (JICE), 1 (1): 26-29, 2015 ISSN 2186-9162, Applied Science and Computer Science Publications.
- [7] A Saminu, Abubakar, Nasiru, L Sagir, Design of NDA Water Distribution Network Using EPANET. International Journal of Emerging Science and Engineering (IJESE) ISSN, 2319-6378, Volume-1, Issue-9, July 2013.
- [8] Prabhata K. Swamee Ashok K. Sharma, Design of water supply pipe networks. 2008 John Wiley & Sons, Inc.
- [9] Lewis A. Rossman, The Epanet 2 Users Manual. United state environmental protection agency. National Risk Management Research Laboratory Cincinnati, OH 45268.
- [10] Sahita I Waikhom, Darshan J, Mehta Optimization of Limbat Zone Water Distribution System Using EPANET. International Research Journal of Engineering and Technology (IRJET) India, Volume: 02 Issue: 04 | July-2015.
- [11] Terry Henshaw and Ify L. Nwaogazie. Civil Engineering. Improving water distribution network performance: A comparative analysis, PENCIL Publication of Physical Sciences and Engineering, Nigeria. Vol. 1(2):21-33.
- [12] Darshan Mehta, Krunal Lakhani, Divy Patel, Govind Patel, Study of water distribution network using Epanet. International Journal of Advanced Research Engineering , Science & Management (IJARESM).

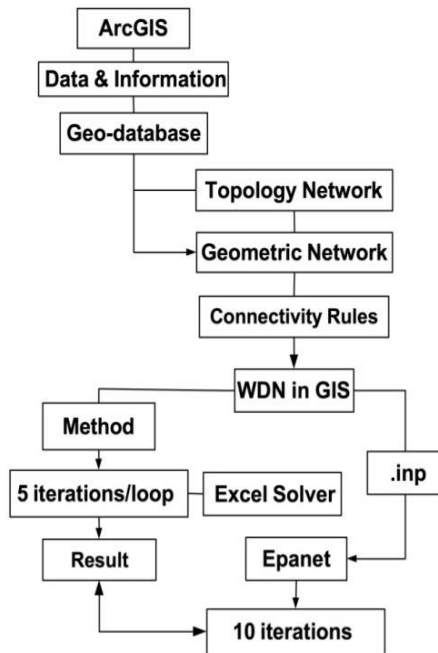


Fig. 12. Flow chart of the method

#### VIII. CONCLUSION

To conclude, the implications of applying this work are to create WDN in GIS by performing GIS with the cooperation of EPANET methodologies. In addition, analyzed loops network according to continuity and energy conservation formulas due to the determination of unknown discharges, flows and pressure at nodes. Hardy-Cross method is used due to solve and analyze closed loops network for flow continuity and head-loss in order to balance the network as the context of this paper. The result of the balanced method was effective finally compared to EPANET hydraulic status simulation which was precise. Ultimately accomplished proper hydraulically balanced loops WDN by performing several iterations empirically to find the corrected flows around the network until head loss around each loop became zero. Hence, as a context these principles have been applied to each pipe and each node in closed-loops pipe network until we have gotten corrected flows and successful result and concisely found the required parameters such as the pressure of nodes, discharges, and water flows and flows direction in the network. This solution technique for loops balancing can be optimized correction and hydraulically balanced method as well.

#### IX. FUTURE WORK

In the practical side, we need to implement it in Afghanistan specially in Kabul city by the support of Ministry of Energy and Water (MEW). In the theoretical side, we will extend the optimization algorithm through a comprehensive